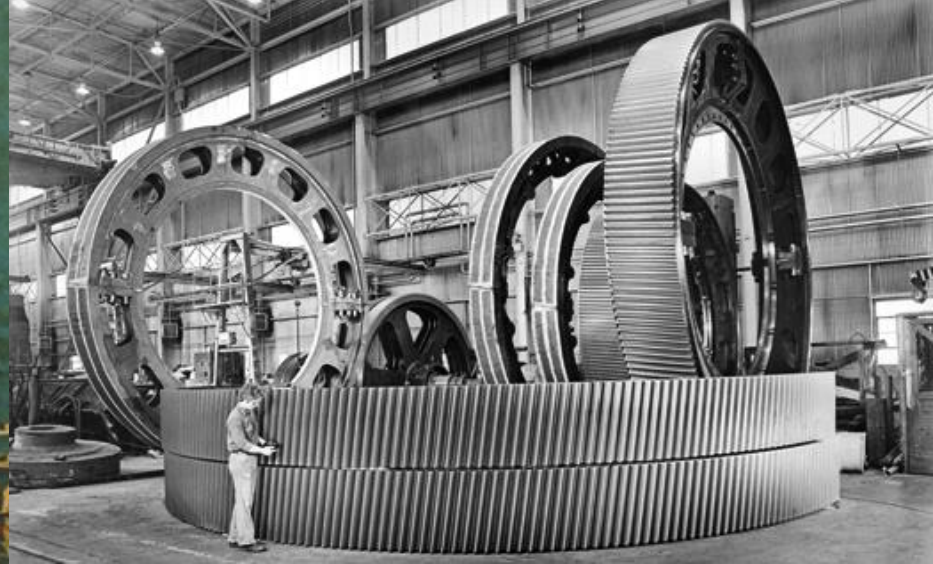
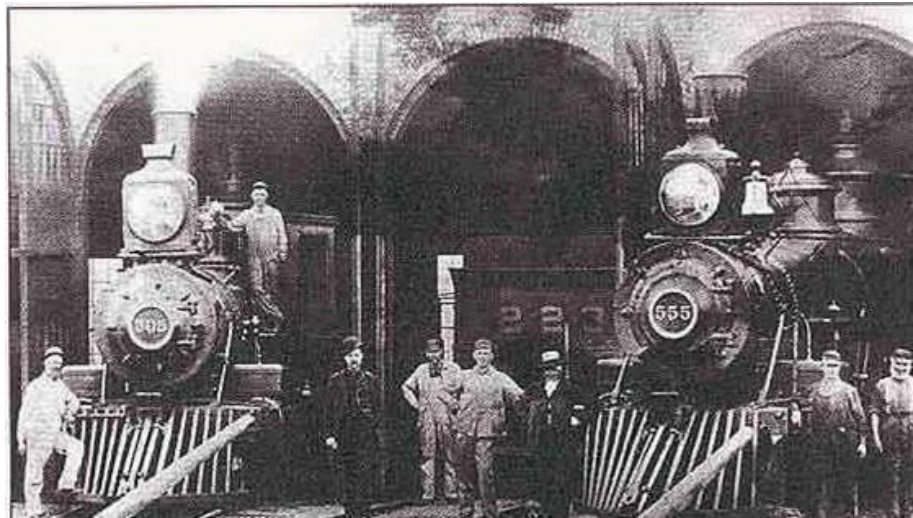


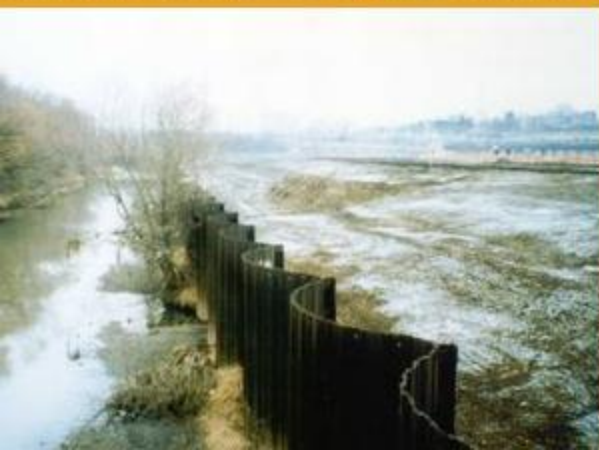
Transformative Potential of Development Authorities





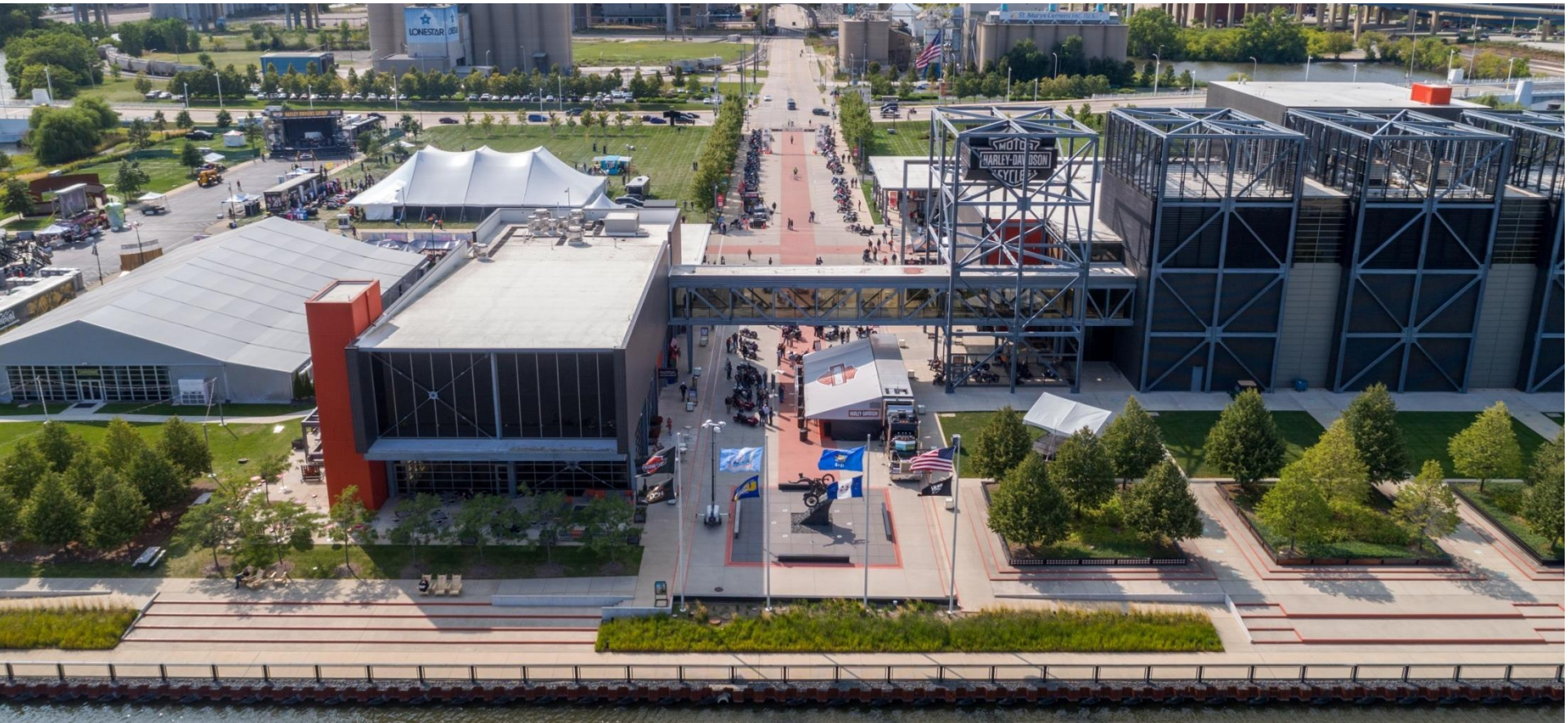
When Milwaukee was the "Machine Shop of the World," the Menomonee Valley was its engine.





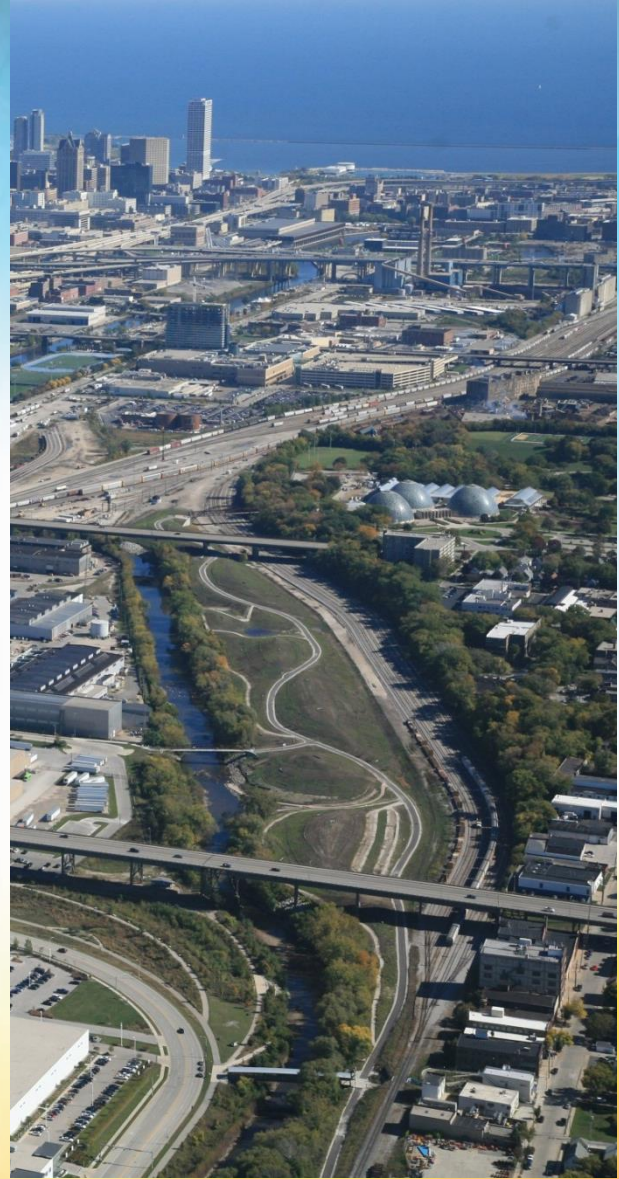












Robust planning and design activities that establish a common vision – and a detailed roadmap to achieve it





*Creatively assemble funding from
numerous resources*

Creatively Assembled Funding from Numerous Sources – CMAQ, TE, HPP Earmark, ARRA

FUNDING SOURCES

Draft 3/24/11

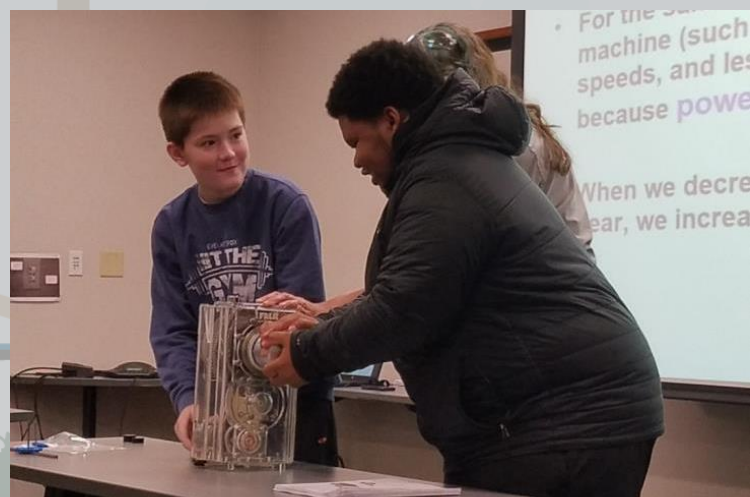
2984-23-00/20/70	2984-10-74	2984-43-00/70	2984-43-01/51/71	2984-23-01/71	ARRA TE Grant	2009 CMAQ Application
HAST (44 th St. Segment)	HAST (Miller Pk -25 th)	HAST (Airline Yards)	Mitchell Park Bridge	HAST (Bike/Ped Conn)	HAST	33rd St Bridge
CMAQ	CMAQ	TE	TE	HPP (CMAQ)	ARRA TE	CMAQ
City of Milwaukee	City of Milwaukee	RACM	WDNR	City of Milwaukee	WDNR	WDNR
No Agreement	Agreement	No Agreement	Agreement	No Agreement		
Initialized 1/20/00	No Final					
\$584,000	\$390,867	\$574,720	\$980,000	\$1,871,793	\$1,538,774	\$1,265,699



2984-43-01	2984-43-51	1693-38-50	1693-38-70	2984-43-70	2984-43-71	2984-07-70
MD Bridge/Ayards	MD Bridge/Ayards	VP 1	VP 1 Pierce Conn.	Airline Yards	MD Bridge	VP 1 Str/Trail
Design	RR	RR	Construction	Construction	Construction	Construction ARRA
\$777,391	\$0	\$241,415	\$1,398,401	\$3,374,926	\$1,571,769	\$1,538,774
\$558,000	\$0	\$180,240	\$1,082,800	\$2,273,500	\$1,257,415	\$1,538,774
\$221,391	\$0	\$81,175	\$315,601	\$1,101,428	\$314,354	\$0
PSE 5/1/11	Not needed	closed	Let 3/9/10	Let 8/9/11	Let 8/9/11	Let 2/10



*Workforce development to connect jobs to
neighborhood residents*

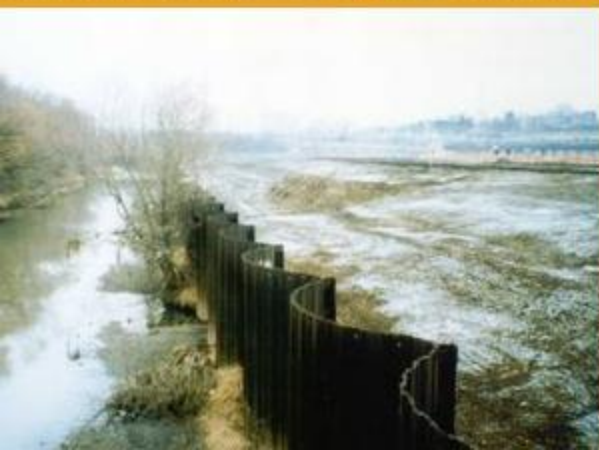




*Address multiple community objectives
at the same time*



Vision and leaps of faith...





***Strong intergovernmental cooperation
and public-private partnerships***



WisDOT + City partnership on the Marquette Interchange kept 75,000 truckloads of material from the landfill and built our park and trails.





Intention and good will...



We believe **our diverse perspectives inspire creativity and better solutions**. We recognize that all parties are important and necessary to this project's success. We believe there are solutions that meet everyone's needs. We work toward those. We bring the right people to the table at the right time. We respect each other's time, intentions, and expertise. **We work for what is best for the project.**

We make balanced, cohesive, informed tradeoffs in a timely fashion to meet our goals. We define and fulfill our responsibilities for different kinds of decisions. We focus on exploring and implementing those options that provide the biggest bang for the buck. Once a decision is made, we document it and don't revisit it unless we receive significant new information. **We follow through on our commitments.**



MENOMONEE VALLEY PARTNERS

TheValleyMKE.org



[menomoneerivervalley](https://www.facebook.com/menomoneerivervalley)



[menomoneerivervalley](https://www.instagram.com/menomoneerivervalley)



[menomoneevalley](https://twitter.com/menomoneevalley)



[menomonee-valley-partners](https://www.linkedin.com/company/menomonee-valley-partners)