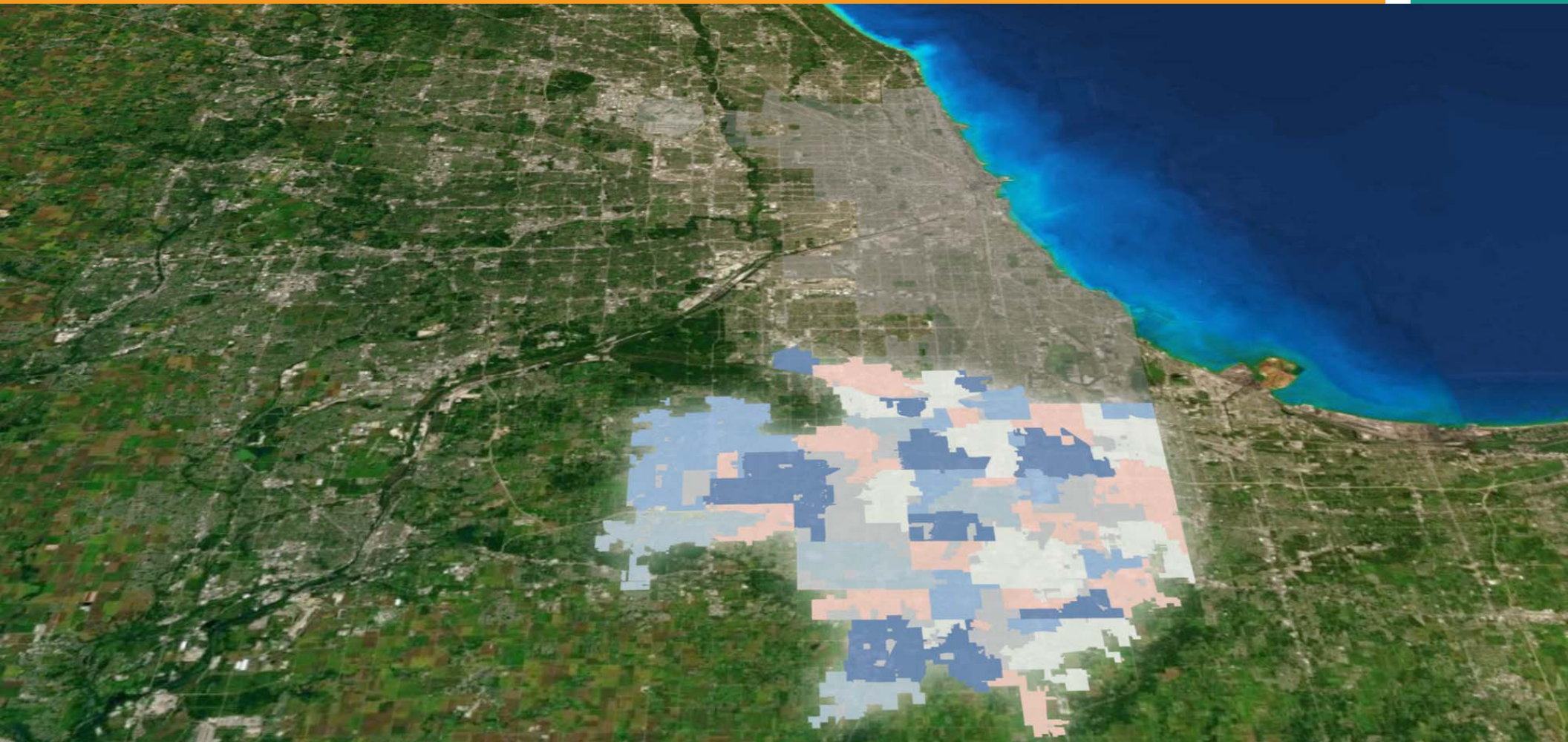


SOUTH SUBURBAN ECONOMIC GROWTH INITIATIVE



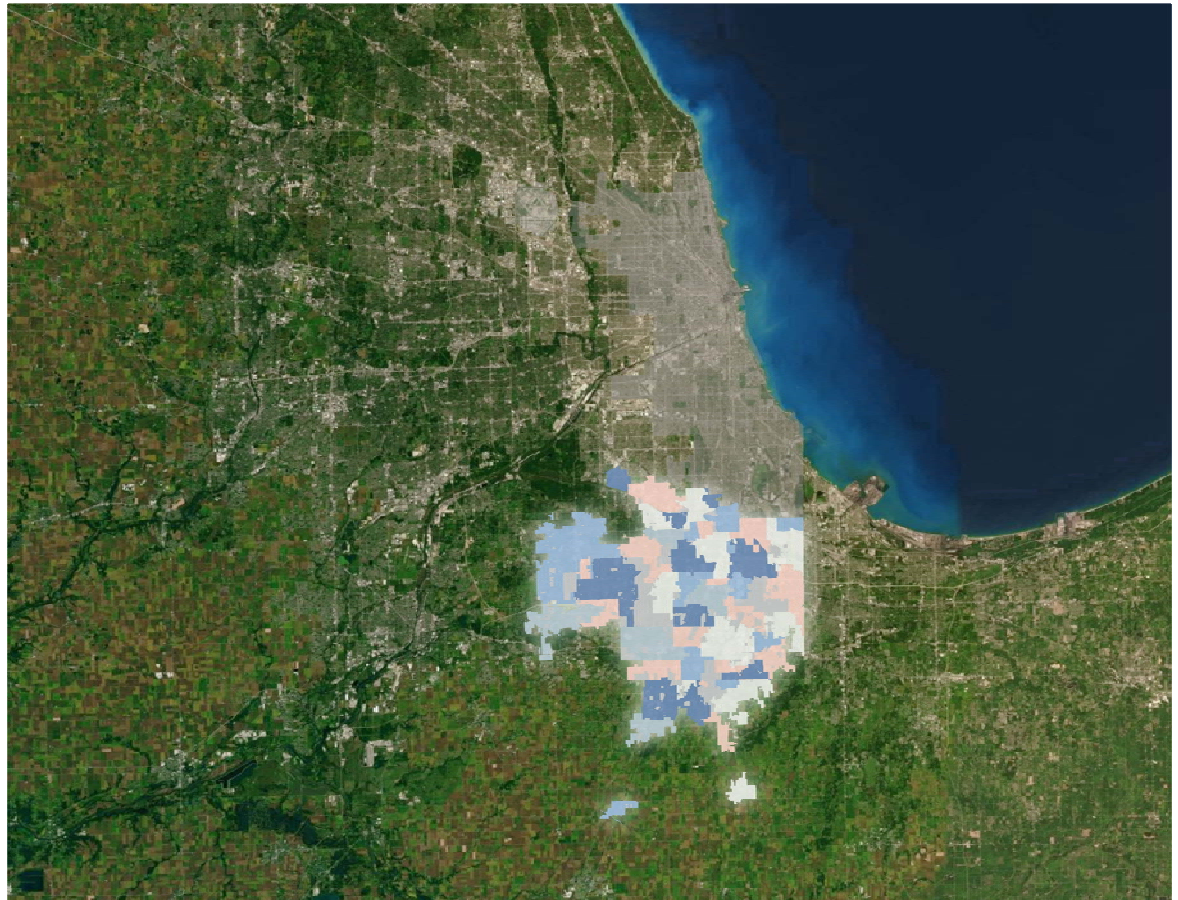
The Southland: A Critical but Overlooked Part of the Region



The Southland: A Critical but Overlooked Part of the Region

Study Area: 34 municipalities

- **500K+** residents
- **20k+** businesses
- **\$16B** economic output
- **130K** jobs
- **74%** of residents work elsewhere in region





▶ **THE VISION:**

- **Transformative change:** The Southland once again becomes economic powerhouse driving growth in the regional economy.

▶ **GETTING THERE:**

- **Comprehensive, mutually reinforcing industry, workforce, community and other strategies** which coordinate, build from and scale existing south suburban efforts
- Signature major **industrial development**
- New institutional **capacity and financial resources**

The Southland has the Potential to be...

ECONOMIC ACTIVITY

- National center for innovation and technology in TD&L and food manufacturing
- Home to growing fabricated metals industry
- Metro Chicago's "green playground"

That becomes a premier place to live and work for...

COMMUNITY AND RESIDENTS

- Diverse working- and middle-class communities
- Downtown workers seeking close, suburban amenities
- Workers in local industrial firms
- Households seeking an active/outdoor lifestyle

Projects Underway

Sector-Based
Workforce Training

Housing Finance
Products

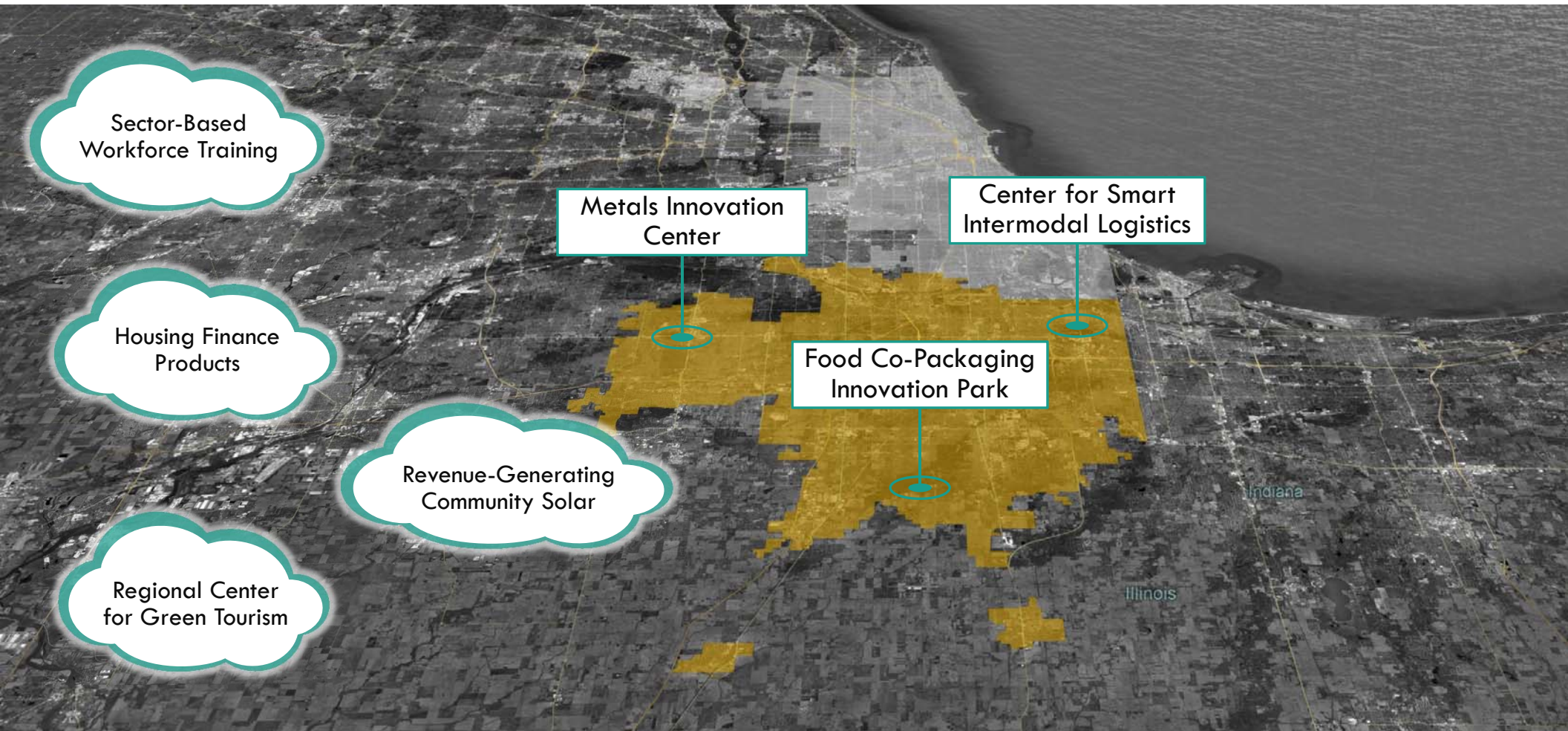
Revenue-Generating
Community Solar

Regional Center
for Green Tourism

Metals Innovation
Center

Center for Smart
Intermodal Logistics

Food Co-Packaging
Innovation Park



Achieving These Goals Requires New Capacity

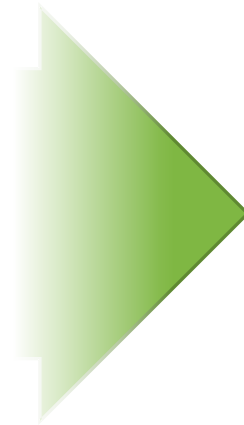
IF WE ARE TO...

Revitalize neighborhoods with transformative investment

Better align workforce with shifting labor demands

Become a center for industry and innovation districts

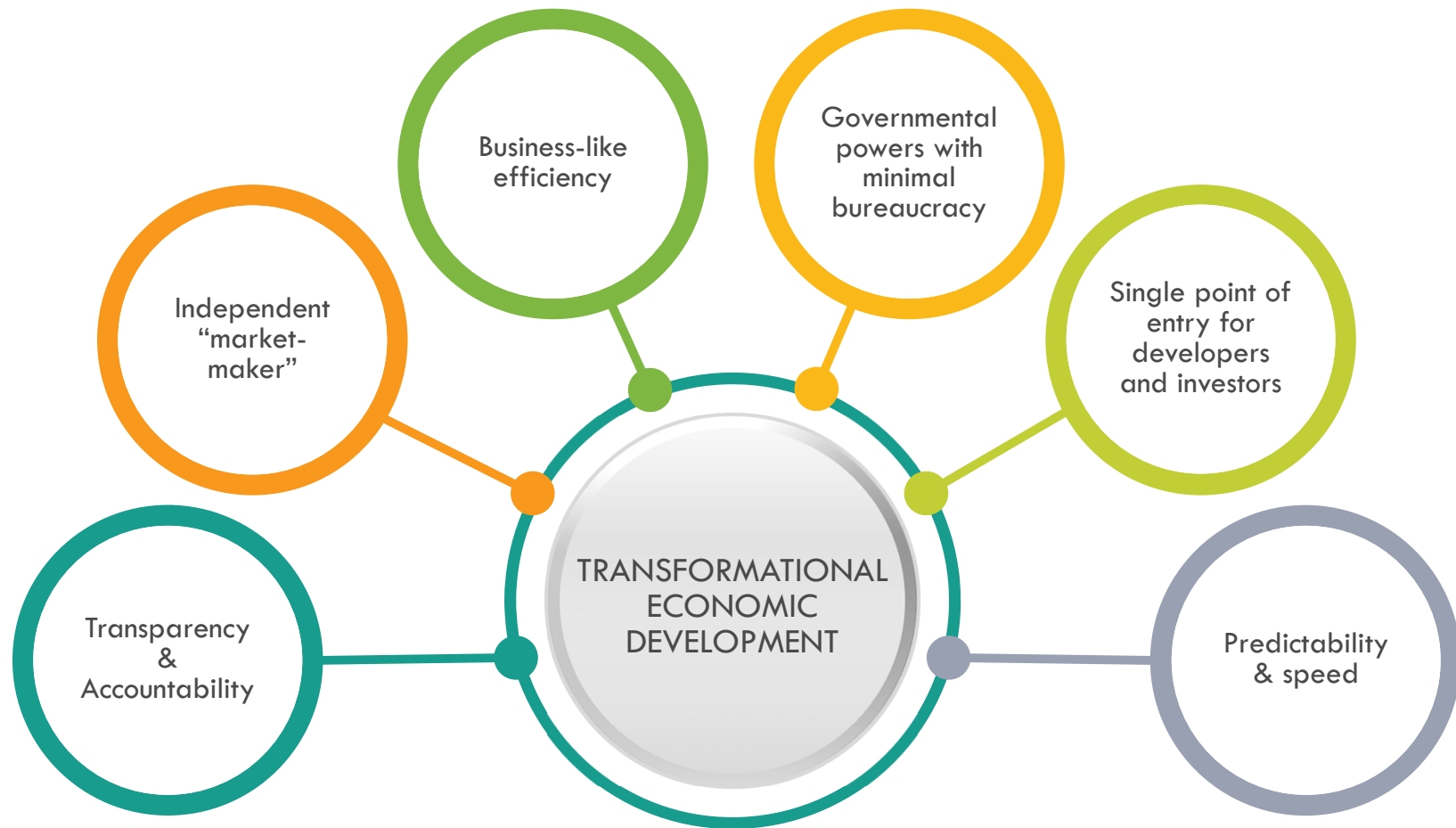
Develop an innovation ecosystem



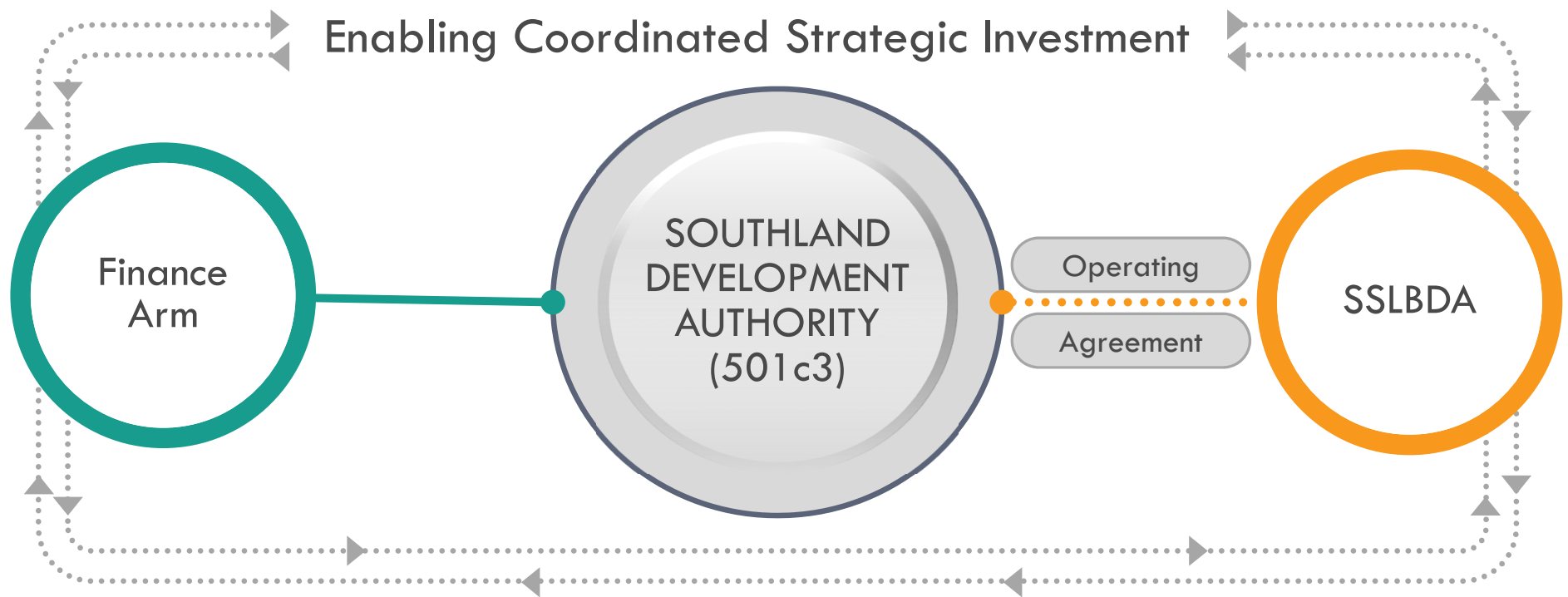
THEN FIRST WE MUST...

- ❑ Build management and financial capacity to undertake large projects
- ❑ Address south suburban economic development comprehensively
- ❑ Act at the leading edge of the market
- ❑ Bring new resources to the Southland

Southland Development Authority Characteristics



Southland Development Authority Structure



Financial Capacity: Southland Development Authority

SOUTHLAND
DEVELOPMENT
AUTHORITY
(501 c3)

Senior Financing

- Market/CRA PACE Financing
- IRB / Private Activity Bonds
- SBA 504 Lending

Subordinate Debt

- Authority Sub Debt / Loan Guarantees
- CDFI Lending

Return Equity

- Opportunity Fund
- Developer Equity
- Seller Note/Ground Lease

Tax Credit Equity

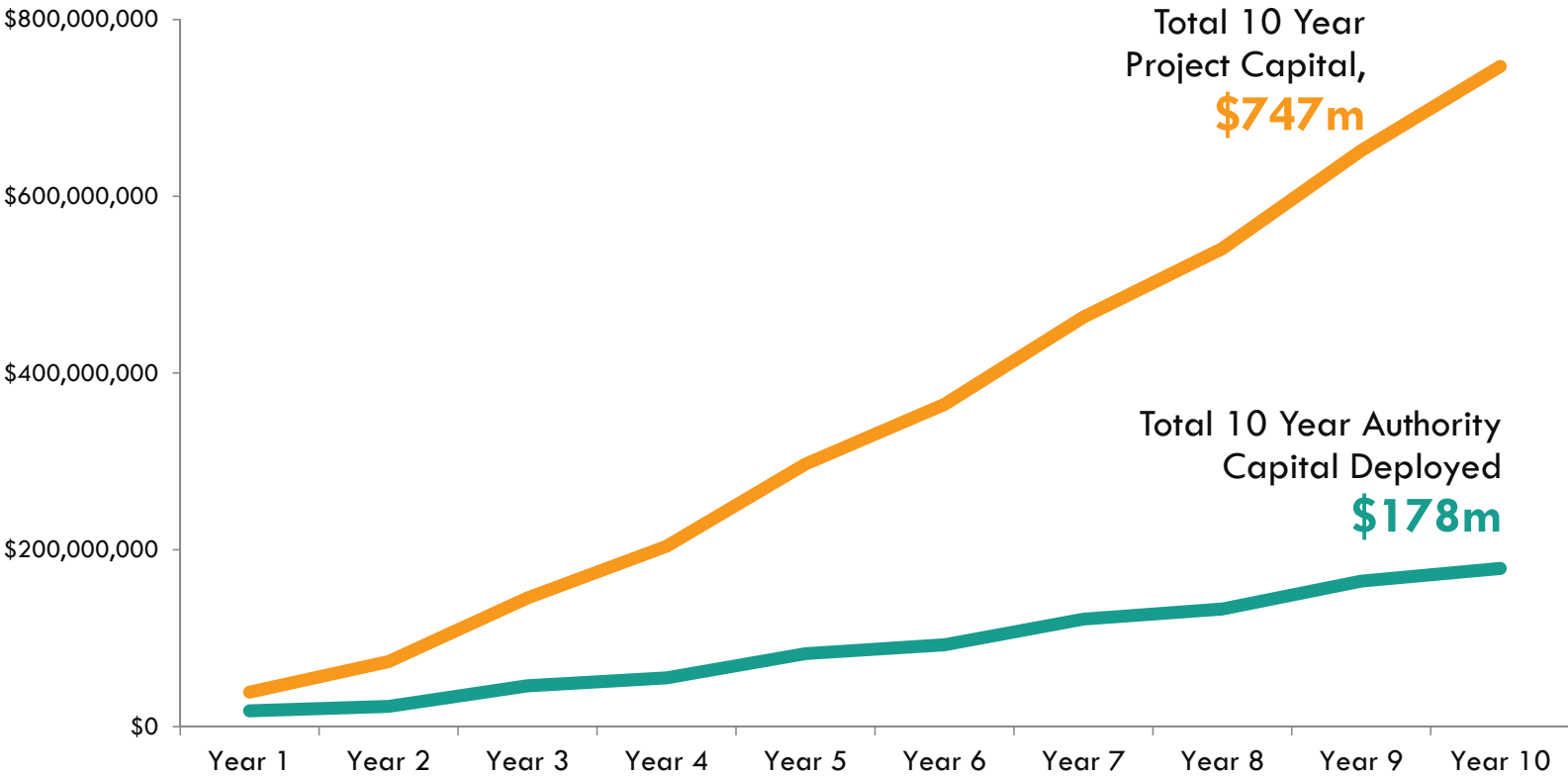
- Federal NMTC / Illinois NMDP
- LIHTC

Grants & Subsidy

- CDBG/HOME/TIF/Local Subsidy
- Philanthropy

Projected Capital Growth

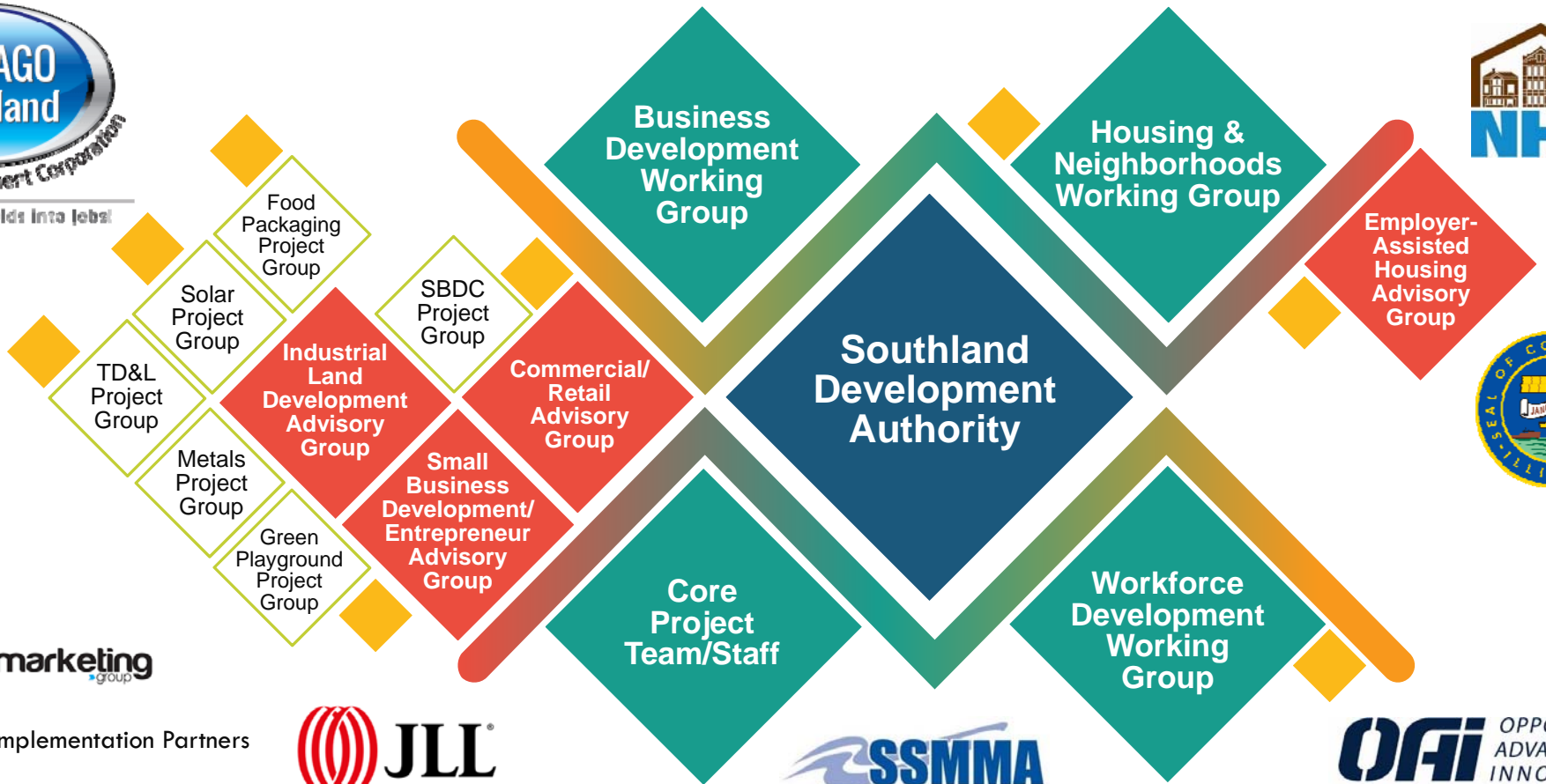
Hypothetical Draft Projection — Model in Progress



Get Involved - South Suburban Economic Growth Initiative



Turning Brownfields into Jobs!



 = Implementation Partners



DISCUSSION

